

Study the Proteolytic Activity of Extremophilic Fungi Isolated from the Soil of the Copper Mines of Malajkhand

Richa Tiwari^{1*} A. S. Yadav² Ragini Gothalwal³

^{1,2,3} Department of Biotechnology, Barkatullah University, Bhopal, Department of Higher Education, Bhopal

Abstract – *Proteases are fundamental for living life forms; they are universal and found in a wide decent variety of sources. Proteases are the key compounds in modern application. Microbial protease assumes a significant job in biotechnological forms. In this work the focal point of our investigation is on the disconnection of proteolytic microorganisms from the outrageous condition of copper mines and their proteolytic movement. The principal technique was embraced to decide the proteolytic action by flooding bromocresol green reagent on casein/skimmed milk agar plates. In the present research, four extremophilic growth was disconnected named Aspergillus, Alterneria, Rhizoctonia and Chlodosporium that develop on most extreme 70°C temperature and made due under soggy warmth condition. Among them, Two detached strains in particular Aspergiillus and Psedomonas demonstrated the most stretched out clear zone arrangement after hatching time 24 hrs. The outcome acquired in the present investigation demonstrated that the vastest clear zones were created at 24 hrs and of hatching period at 37°C. In this manner, these contagious strains were chosen for further quantitative investigation.*

-----X-----

INTRODUCTION

Microorganisms are the most widely recognized wellsprings of business chemicals due to their physiological and biochemical properties, effortless culture conditions and simplicity of cell control. Among microbial catalysts, proteases are the most significant for the business, and establish around 60% of the all out mechanical compound market. These catalysts are utilized for sustenance preparing, pharmaceuticals, cowhide handling, silver recovery in the x-beam film industry, modern waste treatment and as cleanser added substances (Rodarte et al., 2011). Microbial proteases are one of the significant gatherings of mechanically and financially created chemicals and the underlying screening techniques for protease location are of most extreme significance (Vijayaraghavan et al., 2013). Microbial proteases are among the most significant hydrolytic catalysts and have been considered broadly since the appearance of enzymology. Microbial sources are the best decision for financial generation of proteases. As they can be refined in enormous scale in moderately brief time by entrenched aging responses and furthermore ready to create a rich and normal supply of the compound. According to the gauge, the worldwide interest for proteins will rise 7% per annum and this expanding financial significance has guided the examination network to confine hyperactive strains for the creation of novel proteases and resulting

improvement of the different aging parameters for augmenting chemical generation (Tennalli et al., 2012). This paper reports the aftereffects of an examination did to explore the Isolation and portrayal of proteolytic microscopic organisms from soil tests of copper mines and furthermore portrayal of the proteolytic movement of confined bacterial strains by Lowry's strategy. This property is profitable for controlling their action amid the creation of sustenance hydrolysis.

METHODOLOGY

Sample Collection: Soil test was gathered from the surroundings of copper mines of Malajkhand, India.

Isolation and screening of proteolytic microorganisms: Fifteen bacterial societies were disengaged by spread plate technique on supplement agar medium from soil test gathered. They were distinguished based on morphological, social and infinitesimal qualities. All the fifteen bacterial societies were screened for their capacity of protease creation on skim milk agar plate. In this test all the bacterial societies were independently plated on skim milk agar plate and brooded at room temperature and after 24 hrs the zone of leeway was recorded.

For protease screening, the microbial segregates were streaked on casein agar medium (g/l) (peptic overview of creature tissue, 5.0; meat extricate, 1.5; yeast separate, 1.5; sodium chloride, 5.0; agar, 15, casein, 10 and 0.0015% (w/v) BCG) and hatched at 37°C for 48 h. A zone of proteolysis was recognized on the casein agar plates.

Evaluation of Protein

The convergence of the separated protein tests was resolved utilizing the Lowry's strategy (1951) utilizing various examples against the control. The overall groupings of all examples were determined utilizing the equation from the BSA standard graph.

RESULTS AND DISCUSSION:

Different secludes were screened for protease action on the casein agar plates. Protease movement was seen from the zone of hydrolysis saw on agar surface. For further investigation the strain demonstrating biggest zone of hydrolysis was considered and assigned as S9F as parasitic strain and kept up by rehashed sub refined for protein measurement. Among them, Two segregated strains to be specific *Aspergillus* and *Alterneria* demonstrated the greatest clear zone arrangement (22 mm and 19 mm) after hatching time 24 hrs. A comparable perception was accomplished by Milala et al., 2016. They found the best proteolytic movement with *Aspergillus niger* contrasted with *Bacillus*. Proteolytic movement was most extreme at pH 9-0 with azocollagen as substrate. The chemical, which was the significant protein found in the supernate of a fluid culture. Be that as it may, to build up the job of the secluded protease in the destructive conduct of the organism, combination of this protease must be exhibited in the contaminated host and inactivation of the catalyst by quality disturbance must be appeared to result in decreased pathogenicity (Monod et al., 1991).

Protein evaluation:

The absolute protein substance of the examples was dictated by Lowry s strategy. The protein standard utilized was Bovine Serum Albumin (BSA) (1mg/ml) (Table 1 and Figure 1). OD was taking in calorie meter at 660 nm. Table 2 demonstrates the aftereffect of quantitative trial of protein. The microbial secludes were screened for their capacities to create extracellular protease amid their development on protease generation medium (Folasade and Joshua 2005). So as to choose the bacterial seclude with most elevated capability of protease generation, the chose 10 disengages were tried for extracellular protease creation in fluid medium. Among the all disconnects just contagious strain delivered most extreme protein (0.530 µg/ml), that was *Aspergillus* (S9F). In bacterial strain just *Pseudomonas* (S7) created most noteworthy all out protein content (0.498 µg/ml).

Sony and Potty, 2016 evaluated the protease delivered by bacterial confines from soil and water tests gathered from nourishment preparing enterprises. Their outcomes uncovered that all the bacterial secludes under examination emitted protease chemical at differed levels. Proteases have huge applications in different fields, for example, protein hydrolysate, preparing, blending, calfskin handling, squander treatment, cleanser plans, cheddar make, meat tenderization, peptide union, silk industry, natural amalgamation, soy sauce generation, pharmaceutical industry (Rossi et al., 2015).

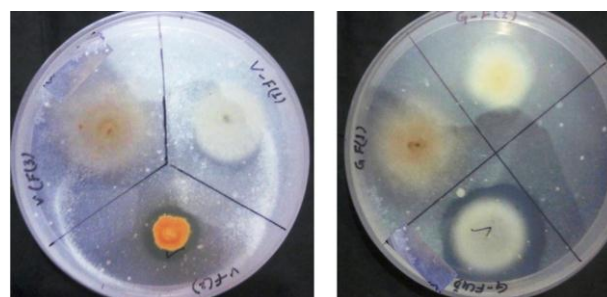


Figure: Proteolytic activity: clear zone around the colony showed positive result and negative result appear without clear zone.

Table 1 Table showing Absorbance of Standard protein (BSA) with different concentrations at 660nm.

Concentration (mg/ml)	Absorbance
0.2	0.376
0.4	0.489
0.6	0.754
0.8	0.996
1.0	1.088

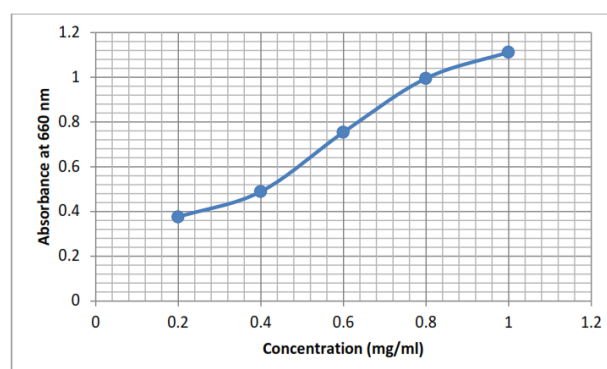


Figure 1 Standard protein graph

Table 2 quantity of total protein produced by various extremophilic isolates

S. No.	Sample id	OD	Protein (µg/ml)
1	S1	0.624	0.479
2	S3	0.640	0.495
3	S7	0.643	0.498
4	S9B	0.603	0.459
5	S6B	0.241	0.100
6	S6C	0.245	0.104
7	S2B	0.624	0.479
8	S5	0.630	0.485
9	S6A	0.657	0.512
10	S9F	0.675	0.530

CONCLUSION:

Proteases are necessary for living organisms; they are ubiquitous and found in a wide diversity of sources. Proteases are the key enzymes in industrial application. Lowry method was used for the quantitative estimation of total protein. The results conclude, Among the all isolates only fungal strain produced maximum protein (0.530 µg/ml), that was *Aspergillus* (S9F). In bacterial strain only *Pseudomonas* (S7) produced highest total protein content (0.498 µg/ml).

REFERENCES:

- Monod M., Togn G.I., Rahalison L. And E. Frenk (1991). Isolation and characterisation of an extracellular alkaline protease of *Aspergillus fumigates*. J. Med. Microbiol. - Vol. 35, pp. 23-28.
- Sony and Potty (2016). Quantitative Estimation of Protease Produced by Bacterial Isolates from Food Processing Industries, International Journal of Engineering Research & Technology (IJERT). Vol. 5 Issue 10, pp. 238-244.
- Rodarte, Mirian Pereira; Dias, Disney Ribeiro; Vilela, Danielle Marques and Schwan, Rosane Freitas (2011). Proteolytic activities of bacteria, yeasts and filamentous fungi isolated from coffee fruit (*Coffea arabica* L.). *Acta Sci., Agron. (Online)* [online]. Vol.33, n.3 [cited 2019-03-02], pp. 457-464.
- Vijayaraghavan P., Samuel Gnana Prakash Vincent (2013). A simple method for the detection of protease activity on agar plates using bromocresolgreen dye. J Biochem Tech 4(3): pp. 628-630.
- Tennalli G., Basavaraj U., Praveenkumar N. (2012). Isolation of Proteolytic Bacteria and Characterization of their Proteolytic Activity. International Journal of Advances in

Engineering, Science and Technology (IJAEST). Vol. 2 No. 3, pp. 185-192.

Milala M.A., Jatau I.A. and Abdulrahman A.A. (2016). Production and Optimization of Protease from *Aspergillus niger* and *Bacillus subtilis* using Response Surface Methodology. IOSR Journal of Biotechnology and Biochemistry (IOSR-JBB), Volume 2, Issue 7 (Nov. – Dec. 2016), pp. 01-07.

Rossi O., Luana M., Francesca N., Oliver K., Calman A., Allan S., Christiane Gerke (2015). Comparison of Colorimetric Assays with Quantitative Amino Acid Analysis for Protein Quantification of Generalized Modules for Membrane Antigens (GMMA). Mol Biotechnol 57: pp. 84–93.

Corresponding Author

Richa Tiwari*

Department of Biotechnology, Barkatullah University, Bhopal, Department of Higher Education, Bhopal

rchtiwari15@gmail.com