

A Review on Visual Features and Click Features of Content Based Image Retrieval by Ranking System

Karthik Kumar K.^{1*} Dr. S. Suresh Raja²

¹ Research Scholar, Department of Computer Science & Engineering, Sri Satya Sai University of Technology, Medical Science, Bhopal (MP)

² Sri Satya Sai University of Technology & Medical Science, Bhopal (MP)

Abstract – The irregularity between textual features and visual substance can cause poor image list items. To take care of this issue, click features, which are more solid than textual information in defending the importance between a query and clicked images, are received in image ranking model. In any case, the current ranking model can't coordinate visual features, which are effective in refining the click-based query items. Visual features and click features are all the while used to acquire the ranking model. Click features which are more solid instead of textual information in advocating the significance among a query and clicked images, are actualized in image ranking model. To accomplish the ranking model, visual and click features are utilize.

Key Words - Image Retrieval, Visual Features, Click Features, Ranking Model

-----X-----

INTRODUCTION

Image mining manages the extraction of learning, image data relationship, or different examples not unequivocally put away in the images. The entrance of mixed media information framework requires the capacity to look and sort out the information in a sequential manner. Since the accessibility of innovation to look through content in web has been expanded, the aftereffect of recovering significant information has turning into a difficult issue. A few researchers have examined strategies to retrieve images with respect to their substance anyway huge numbers of these frameworks needs the user to query dependent on image models like shading or surface in which users are curious about it. More often than not, user might want to make semantic inquiries by employing textual portrayals and find significant images to those of semantic questions. In this task, a set of images from internet searcher are gathered and the visual features and the click features for the images are separated. Visual features are utilized to improve the better re-rank for giving the pertinent query image results. A set of visual features are utilized to depict various parts of images. And furthermore it is utilized to incorporate different visual features to compute the likenesses between the query image and different images. The model at that point prepares an order model with the named data and embraces it for ranking. Whenever

given a query, the learning to rank framework retrieves data from the collection and returns the top-ranked data.

IMAGE RETRIEVAL

Image recovery is a key issue of user concern. Typical method for image recovery is the content based image recovery procedure (TBIR). TBIR-needs rich semantic textual portrayal of web images. This strategy is prominent yet needs quite certain depiction of the query which is dull and not constantly conceivable. Accordingly for the most part the procedure of image search incorporates searching of image dependent on keyword composed.

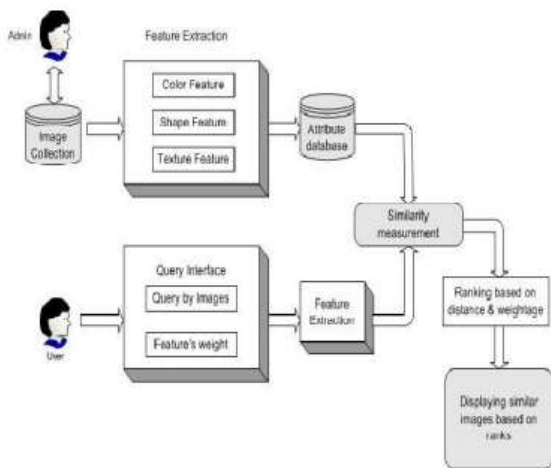


Figure 1 Architecture of image harvesting and re-ranking system

From the design chart a diagram is acquired. Every module saw in the figure is a mind boggling module having own methods for execution and comprehension. Select factors of Digital image are utilized. The enormous image collection is exposed to include extraction process where the characteristics of the image both visual, for example, shading, surface and shape and semantic, for example, deliberate, clicks, marks and so forth are extricated from the component database utilizing fitting techniques. The query image can be any of the well known organizations. The query image is exposed to highlight extraction process and query features are acquired. In likeness measurement process, the query's component is contrasted and the features put away in highlight database. The separation between the two features is determined and loads are resolved. The output images are then sorted and ranked, so that most similar images can be displayed to the user. This system is based on the following functionalities and features:

a) Extraction

- (I) **Visual features** If the entered query is "sunset", color ought to be the viewed as highlight as color is the primary identifier. For "building" shape as a component instead of color is suitable. While, for "day off" color and shape is viewed as then separation among "day off" "cotton" would end up hard for the system. Hence, surface will turn into the primary identifier for "day off" not color or shape.
- (II) **Semantic features** Semantics is the real expectation of the user behind the query. This expectation can't be deciphered by the machine, bringing about the semantic hole. For example, if the entered query is "passage", user may plan for a vehicle or an individual named "Portage". In any case, system semantic Along these lines, to

decrease the semantic hole, semantic component should be considered.

b) Distance computation and closeness measurement

This progression computes the distinction between the images as far as comparing highlight the separation, progressively comparative the images are. For instance, if the entered query is "lake" and chose highlight is color. The images are plotted in highlight space and separation between them is determined. The images those untruths closer in this space are given two element vectors A_n and B to such an extent that Euclidean separation is given by: City square is another methodology for separation measurement.

$$A = \begin{pmatrix} a_1 \\ a_2 \dots \\ a_n \end{pmatrix} \quad B = \begin{pmatrix} b_1 \\ b_2 \dots \\ b_n \end{pmatrix}$$

Euclidean distance is given by:

$$\sqrt{\sum_{i=1}^n (a_i - b_i)^2}$$

City block is another approach for distance measurement

$$\sum_{i=1}^n |a_i - b_i|$$

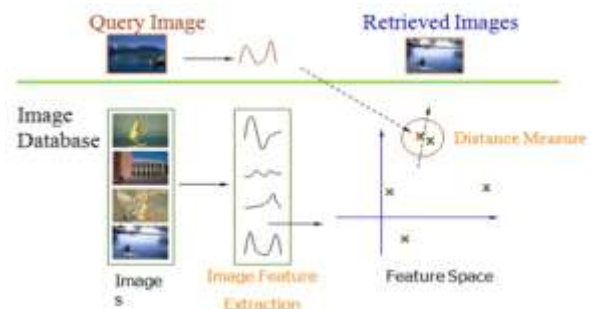


Figure 2: distance calculation and measurement

Feature extraction will be mandatorily trailed by separation estimation and closeness measurement. As referenced in CBIR execution, image arrangement ought to be quick and effective. In this specific situation on the off chance that visual features are considered as features to be separated, at that point low level histogram

portrayal is most productive as histogram is a model of likelihood dispersion of power levels of visual features. Its age is brisk just as simple for correlation. In the event that semantic features are viewed as satellite image retrieval system (SIRS) is a decent approach. Comprehension of semantic features and their extraction require data and information trade. Proposes utilization of xml for data trade and utilization of web metaphysics language for information trade Semantic learning is portrayed utilizing standard based master system, neural system, choice trees and so forth. In connection to this concept, cosmology alludes to communicating components of area just as proposed significance of component. Query "portage" referenced above is a model requiring usage of ontology. The center design can be stretched out to Re-rank the images dependent on different parameters. The techniques for image retrieval and re-ranking may contrast in feature extraction algorithms, score count strategies, and score matching algorithms and re-ranking algorithms separately or in blend. This paper is a survey work thinking about the above parameters through a nitty gritty investigation of related space explicit features. A basic and thinking cordial approach to begin with is Content based image retrieval (CBIR) technique.

Visual attribute	Factors under consideration
1.Colour	1.Color space 2.Color Correlogram 3.Coherence vector 4.histogram[S] 5.colour moment
2.Texture	1.Tamura features 2.Wold Feature 3.Gabor filter feature
3.Shape	1.Moment Invariant 2.Turning Angles 3.Polynomial approximation 4.Fourier Descriptors

Figure 3: Visual Attributes of Image

CONTENT BASED IMAGE RETRIEVAL

An image retrieval system is a computer system that can peruse, search and retrieve images from huge databases of advanced images. They are likewise named as image search systems and are intended to an assorted variety of users, image types and databases. Image users can be experts, researchers, understudies and ordinary citizens and images can be put away in different organizations like JPEG, GIF and BMP. The collection of images can be classified by the applications and a few models incorporate satellite image databases, medicinal image databases, endeavor collection databases and individual collection databases. Image retrieval from these huge scaled databases can utilize a few pertinent image properties. A portion of the significant qualities are recorded underneath. Nearness of a specific combination of color, texture or shape features (model – green boxes) Presence of plan of explicit kinds of items (model - autos around a structure) Depiction of a specific sort of occasion (model – Cricket coordinate) Presence of named people, area or occasions (model – Prime

Minister welcoming a group) Subjective feelings that can be related with the image (model – outrage or bliss) Metadata (model – who made the image, when and where) The working and execution of the retrieval systems vary as indicated by the properties utilized. When all is said in done, these can be gathered into two classifications. (I) Description Based Image Retrieval (DBIR) (ii) Content Based Image Retrieval (CBIR)

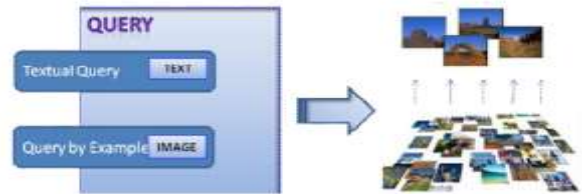


Figure 4: Image Retrieval Systems

DBIR is keyword or content put together while CBIR is based with respect to substance of the images. In DBIR, the images are portrayed dependent on user-characterized writings. The images are recorded and retrieved dependent on these simple portrayals, for example, their size, type, date and time of catch, character of proprietor, keywords or some content depiction of the image. The image records are predefined dependent on these depictions and they are searched on these lists when a query is presented. A case of content based way to deal with image retrieval is appeared in Figure.

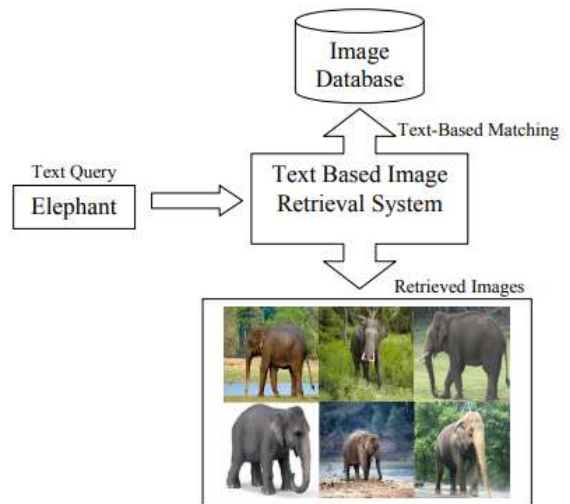


Figure 5: Text-Based Image Retrieval Approach

The content based depictions of the images are normally composed physically for each image by human administrators, in light of the fact that the programmed age of keywords for the images is troublesome without consolidation of visual information and feature extraction. Therefore, this is a very work broad process and unrealistic in the present mixed media information age. Since the

portrayal of images is especially abstract, the robotized process to produce a content based depiction for ordering of the images could be exceptionally incorrect and inadequate. Additionally, human entered keywords for images are wasteful and it isn't constantly workable for a user to make keywords that best depicts an ideal image. Thus, a system that can search images dependent on the substance would be increasingly useful as far as both related retrieval and exact results. Content-Based Image Retrieval (CBIR) systems are search engines for image databases and file images as per their substance. An ordinary errand illuminated by CBIR systems is that a user presents a query image or arrangement of images and the system is required to retrieve images from the database as comparative as could be allowed. Another errand is the help for perusing through enormous image databases, where the images should be gathered or composed as per comparative properties. In spite of the fact that the image retrieval has been a functioning research territory for a long time this troublesome problem is still a long way from being tackled is as yet a functioning research zone, fascinating for the two academicians and researchers. A CBIR system is considered as an increasingly alluring choice for image retrieval when contrasted and DBIR system in light of the fact that most web-based image search engines depend absolutely on metadata, (for example, labels, content keywords and content depictions related with the image) and this creates a great deal of garbage in the results. The ebb and flow advertise requirement is to have techniques that can search and retrieve images in a manner that is both time effective and precise. As this research work is centered around the plan and development of CBIR systems that intends to meet these requirements, a short prologue to the equivalent is introduced in the accompanying area.

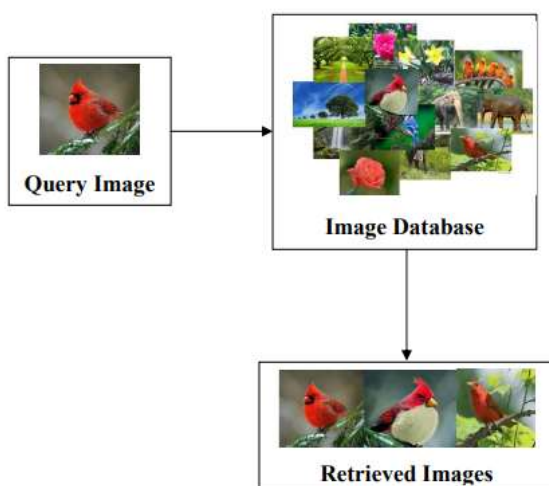


Figure 6: Example of CBIR Approach

PRACTICAL APPLICATIONS OF CBIR

Research and development issues in CBIR cover a range of topics, many shared with mainstream image

processing and information retrieval. Some of the most important are: understanding image users' needs and information-seeking behavior

- Identification of suitable ways of describing image content
- Extracting such features from raw images
- Providing compact storage for large image databases
- Matching query and stored images in a way that reflects human
- Similarity decisions efficiently accessing stored images by content
- Providing usable human interfaces to CBIR systems

Crime Prevention Law enforcement agencies typically maintain large archives of visual evidence, including past suspects' facial photographs, fingerprints, tyre treads and shoeprints. These archive databases are searched whenever a serious crime is committed and are used for identification and recognition of crimes and crime patterns. Example applications include automatic fingerprint matching and face recognition. The Military applications of imaging technology also have a variety of image databases, which are used for the recognition of enemy aircraft from radar screens, identification of targets from satellite photographs and provision of guidance systems for cruise missiles. Military application opportunities include autonomous systems, real-time operator support and offline analytics. Intellectual Property Trademark image registration and copyright protection have long been recognized as prime application areas for CBIR to ensure that there is no risk of illegal usage.

- **Architectural and Engineering Design:** Architectural and Engineering design share a number of common features like the use of stylized 2D and 3D models to represent design objects. The need to visualize designs for the benefit of non-technical clients and the need to work within externally-imposed constraints like financial constraints, means that the designer needs to be aware of previous designs.
- **Fashion and Interior Design:** Similarities can also be observed in the design process in other fields, including fashion and interior design. Here, again, the designer has to work within externally-imposed constraints, such as choice of materials to suit climatic conditions.

- Journalism and Advertising:** Both newspapers and stock shot agencies maintain archives of still photographs to illustrate articles or advertising copy. These archives can often be extremely large (running into millions of images) and extremely expensive to maintain. Broadcasting corporations, having millions of hours of archive video footage, also face similar problems.
- Medical Diagnosis:** The increasing reliance of modern medicine on diagnostic techniques such as radiology, histopathology and computerized tomography has resulted in an explosion in the number and importance of medical images.
- Geographical Information Systems (GIS) and Remote Sensing:** CBIR has also found to be useful by managers responsible for planning marketing and distribution in large corporations where the need to be able to search by spatial attribute (e.g. to find the 10 retail outlets closest to a given warehouse) is important.
- Cultural Heritage Museums and art galleries deal in inherently visual objects:** The ability to identify objects sharing some aspect of visual similarity can be useful both to researchers trying to trace historical influences and to art lovers looking for further examples of paintings or sculptures appealing to their taste. CBIR systems proposed belong to this category.
- Education and Training:** It is often difficult to identify good teaching material to illustrate key points in a lecture or self-study module. The availability of searchable collections of video clips and large scaled image databases, that can be used as examples to describe and explain complex lessons, could reduce preparation time and lead to improved teaching quality.
- Home Entertainment:** Much home entertainment is image or video-based, including holiday snapshots, home videos and scenes from favorite TV programmes or films and is considered as a mass market for CBIR technology.

RANKING PROBLEM

Learning to rank can be utilized in a wide assortment of uses in Information Retrieval (IR), Natural Language Processing (NLP), and Data Mining (DM). Run of the mill applications are archive retrieval, master search, definition search, community filtering, question replying, keyphrase extraction, record

outline, and machine interpretation. Without loss of simplification, we take record retrieval as example in this article. Report retrieval is an assignment as pursues. The system keeps up a collection of reports. Given a query, the system retrieves archives containing the query words from the collection, ranks the records, and returns the top ranked reports. The ranking undertaking is performed by utilizing a ranking model $f(q, d)$ to sort the archives, where q signifies a query and d indicates a record. The likelihood models can be determined with the words showing up in the query and archive, and therefore no preparation is required (just tuning of few parameters is vital). Another pattern has as of late emerged in archive retrieval, especially in web search, that is, to utilize AI techniques to consequently develop the ranking model $f(q, d)$. At web search, there are numerous sign which can speak to significance, for example, the stay texts and PageRank score of a web page. Joining such information into the ranking model and consequently developing the ranking model utilizing AI techniques turns into a characteristic decision In web search engines, a lot of search log data, for example, click through data, is aggregated. This makes it conceivable to get preparing data from search log data and naturally make the ranking model. Truth be told, learning to rank has turned out to be one of the key technologies for current web search.

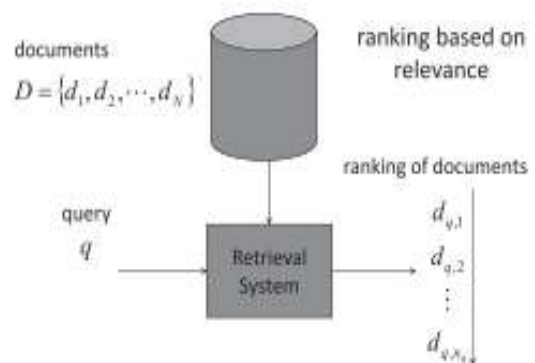


Figure 7 Document retrieval

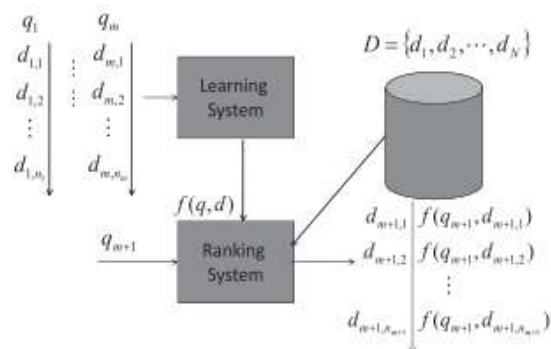
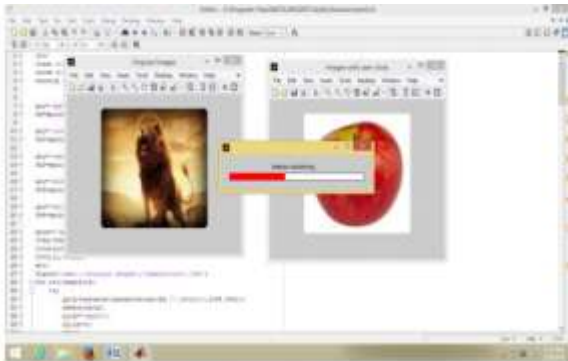


Figure 8 Learning to rank for document retrieval

Working System

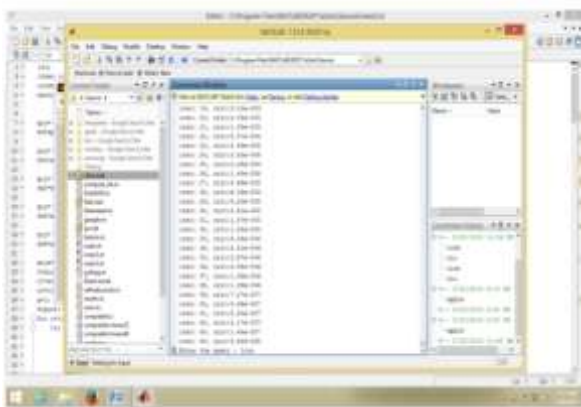
The following are the screenshots for the proficient ranking model for image retrieval utilizing user clicks and visual features got in MATLAB.

1. Feature Extraction



The visual features and click features are extracted for the images in the dataset.

2. Entry of query



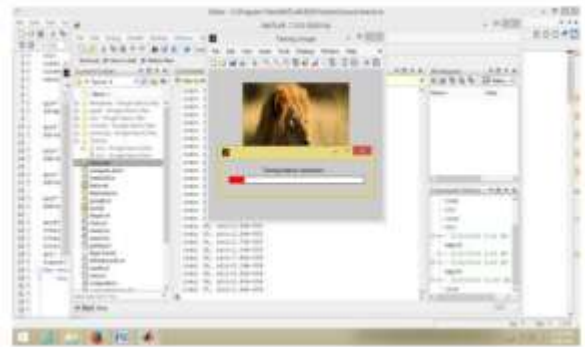
The user enters the query in the command window.

3. Image download



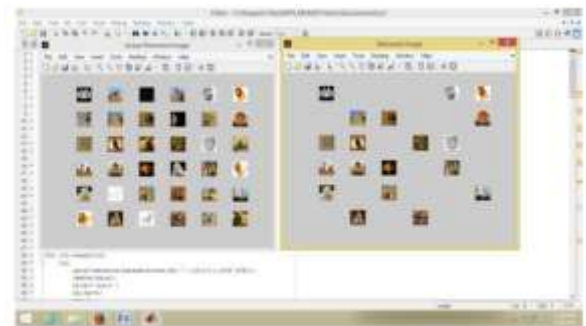
The images corresponding to the given query is downloaded from the google search results page.

4. Feature Extraction of downloaded images



The features for the images downloaded from the google search results page are extracted.

5. Retrieval of top ranked images using FALM



The images are re-ranked using ILSI and displayed as retrieved image and the actual retrieved images are displayed so that the results can be compared.

CONCLUSION

In this article, we exhibited move in the direction of empowering "self-learning search engines" that can consequently conform to user conduct and inclinations. We found that historical data could in fact be utilized to altogether and significantly improve online learning to rank for IR. a novel ranking model dependent on the learning to rank structure. Visual features and click features are all the while used to acquire the ranking model. Click features which are more solid instead of textual information in advocating the significance among a query and clicked images, are actualized in image ranking model. By learning the query-explicit semantic spaces it serves to fundamentally grow both the proficiency and adequacy of image re-ranking. It learns distinctive visual semantic spaces consequently for various entered query and it improves the ranking strategies.

REFERENCES

[1]. Hinton G, Srivastava N, Krizhevsky A et. al. (2013). Improving neural networks by preventing co-adaptation of feature

- detectors, in *Neural and Evolutionary Computing*, pp. 1-8.
- [2]. Wang S I, Manning C D (2013). Fast drop out training, in *Proceedings of the 30th International Conference on Machine Learning*, , pp. 1-9.
- [3]. Tom Schaul (2012). No more pesky learning rates, in *Proceedings of the 30th International Conference on Machine Learning*, pp. 1-9.
- [4]. Kar P, Jain P, Karnick H C (2013). On the generalization ability of online learning algorithms for pair wise loss functions, in *Proceedings of the 30th International Conference on Machine Learning*, pp. 1-9.
- [5]. Pascanu R, Bengio Y (2013). Revisiting natural gradient for deep networks, in *eprintarXiv: 1301.3584*, pp. 1-18.
- [6]. Osman Ali Sadek Ibrahim and Dario Landa-Silva (2017). ES-Rank: evolution strategy learning to rank approach, in *Proceeding of SAC '17 Proceedings of the Symposium on Applied Computing*, pp. 944-950.
- [7]. Van Dang, Michael Bendersky and W. Bruce Croft (2013). Two-Stage Learning to Rank for Information Retrieval, in *Proceedings of the 35th European conference on Advances in Information Retrieval*, pp. 423-434.
- [8]. Jain P, Natarajan N, Tewari A. Predtron (2015). A family of online algorithms for general prediction problems, in *Advances in Neural Information Processing Systems*, 37, pp. 1-9.
- [9]. Van Dang, Michael Bendersky and W. Bruce Croft (2013). Two-Stage Learning to Rank for Information Retrieval, in *Proceedings of the 35th European conference on Advances in Information Retrieval*, pp. 423-434.
- [10]. Wan J W, Zhang Y, Hoi S H, Solar (2015). Scalable online learning algorithms for ranking, in *Proceedings of the 53rd Annual Meeting of the Association for Computational Linguistics*, pp. 1692-1701.
- [11]. Chen, Y.; Wang, J.Z. (2002). A Region-Based Fuzzy Feature Matching Approach to Content-Based Image Retrieval. In *IEEE Trans. On PAMI*, Vol. 24, No. 9, pp. 1252-1267
- [12]. Kodituwakku, S.R.; Selvarajah, S. (2004). Comparison of Color Features for Image Retrieval. *Indian Journal of Computer Science and Engineering*, Vol. 1, No. 3, pp. 207-211)
- [13]. Choras, R. (2003). Content-based image retrieval using color, texture, and shape information. In. Sanfeliu, Riuz-Shuleloper J.(eds) *Progress m pattern recognition, speech and image analysis*. Springer, Heidelberg
- [14]. Xue, B.; Wanjun, L. (2009). Research of Image Retrieval Based on Color. *IEEE International Forum on Computer Science-Technology and Applications*
- [15]. Maheshwary, P.; Sricastav, N. (2009). Prototype System for Retrieval of Remote Sensing Images based on Color Moment and Gray Level Co-occurrence Matrix. *International Journal of Computer Science Issues*, Vol. 3, pp. 20-23
- [16]. Buch, P.P.; Patel, N.M. (2011). Comparison of Color moments and color histogram as a choice of feature extraction method for content based image retrieval. *National Conference on Recent Trends in Engineering and Technology*, B.V.M. Engineering College, V. V. Nagar, Ind.

Corresponding Author

Karthik Kumar K.*

Research Scholar, Department of Computer Science & Engineering, Sri Satya Sai University of Technology, Medical Science, Bhopal (MP)